

# Forevermark Vendor Style Guide

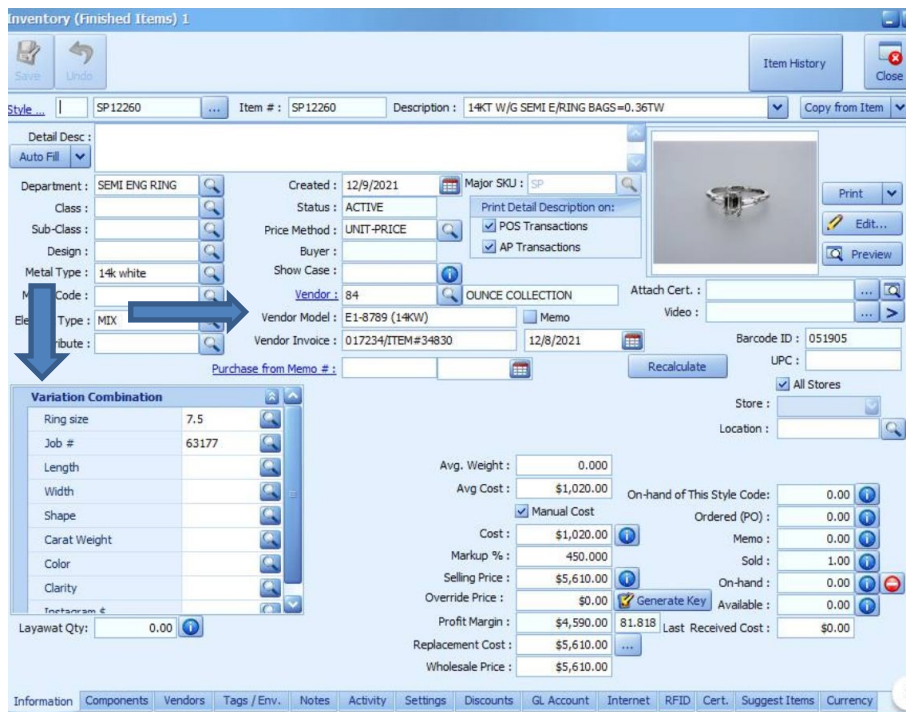
## for Jewelmate Point of Sale

Forevermark has created their vendor style numbers in such a way that each variation of a particular design is accounted for, so there is no need to customize your numbers with metal colors, gemstones, sizes, or other information. Please see the attached guide for reading Forevermark style numbers.

The correct style number for Forevermark is entered in the Design # field: FR1002RD025D2Y0650

Examples of incorrectly entered style numbers include: FR1002RD025, FR1002RD025D, FR-1002RD

Enter Forevermark FMPC (serial) numbers into one of 15 variation fields available in the Jewelmate software. It is advised to make this a required field.



\* As of 12/15/2021: Jewelmate has a 150-character limit for entering vendor style numbers and a 30-character limit for serial numbers.