

Frederick Goldman Vendor Style Guide

for Jewelmate Point of Sale

Frederick Goldman has created their vendor style numbers in such a way that each variation of a particular design is accounted for, so there is no need to customize your numbers with metal colors, gemstones, sizes, or other information. Please see below for help in reading Frederick Goldman's style numbers.

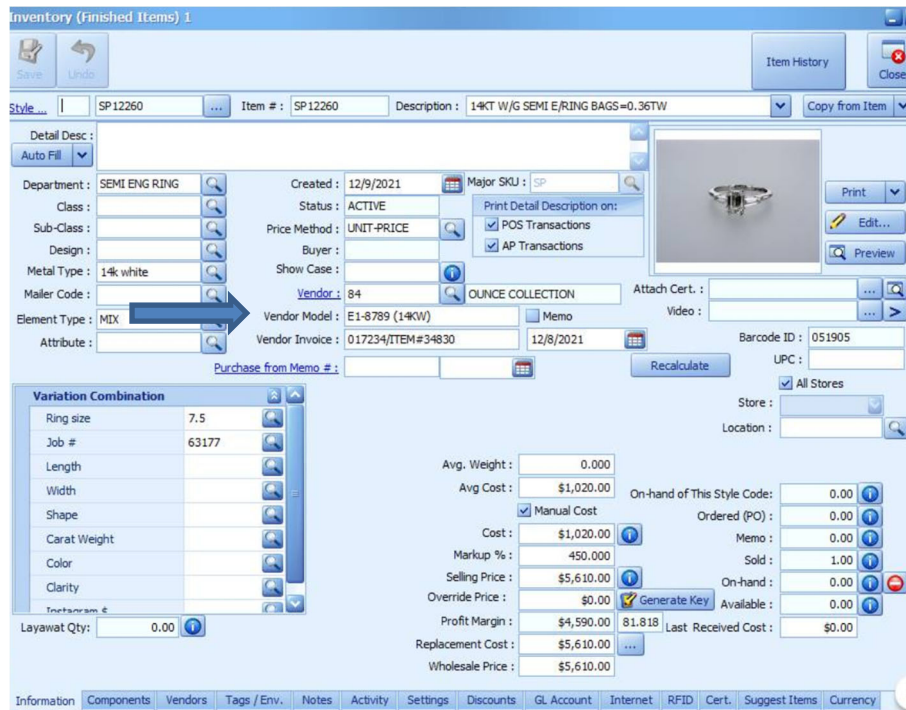
Ex: 11-8873W5-G.00

- ⇒ **11** indicates that it is an engraved band (product type).
- ⇒ **8873W5** is the model indicator.
- ⇒ **G** means it's a Gent's band.
- ⇒ **00** following the period indicates which metal it is.

The correct style number for Frederick Goldman is entered in the Vendor Style # field: 11-8873W5-G.00

Examples of incorrectly entered style numbers include: 11-9973W5-G, 11-8873, 11-8873W5-G-00, 11-8873W5.G.00

Frederick Goldman does not use serial numbers.



* As of 12/15/2021: Jewelmate has a 150-character limit for entering vendor style numbers and a 30-character limit for serial numbers.