

Simon G Vendor Style Guide for JCS Point of Sale

Simon G has created their vendor style numbers in such a way that each variation of a particular design is accounted for, so there is no need to customize your numbers with metal colors, gemstones, sizes, or other information. Please see the attached guide for reading Simon G numbers.

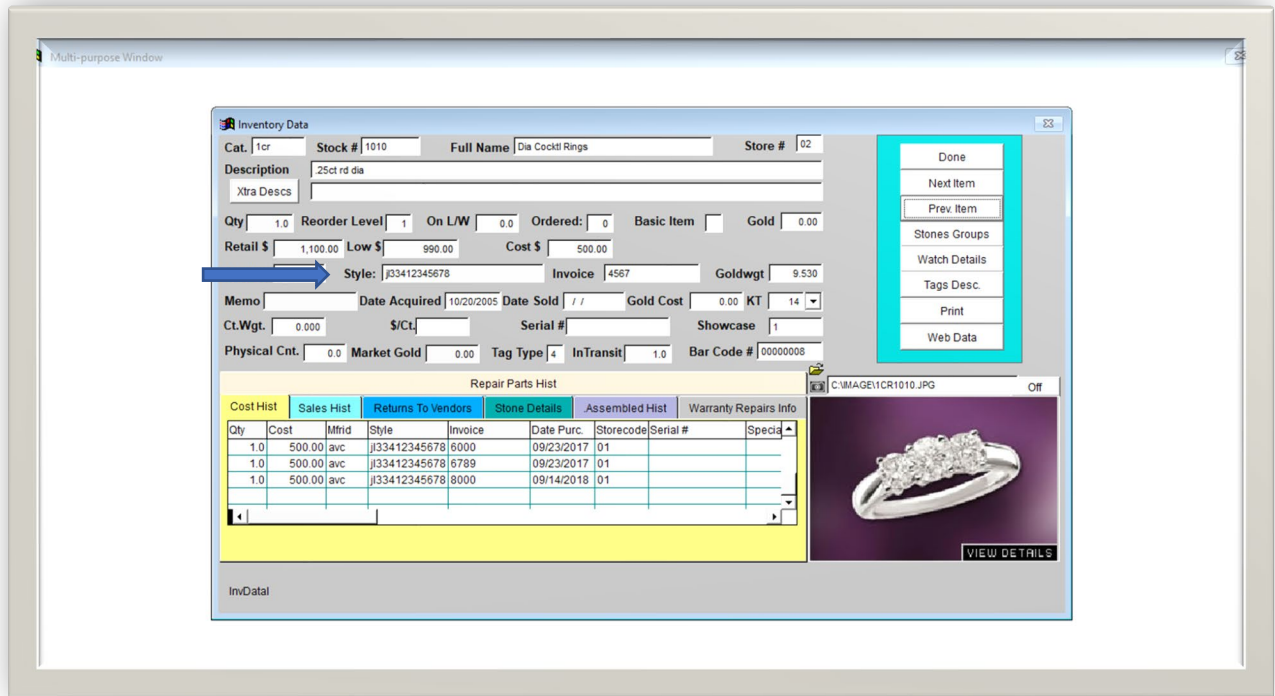
The correct style number for Simon G is entered in the Style # field: LB2060

Examples of incorrectly entered style numbers: LB-2060, LB2060/430087

JCS will auto populate any SKU that has been received before – be careful of using this as you begin to correct any previously bad entries.

Enter Simon G serial numbers in a Serial # field.

JCS also gives you the ability to receive your inventory as a csv file, please contact them directly for more information.



* As of 12/15/2021: JCS has a 20-character limit for entering vendor style numbers and a 15-character limit for entering serial numbers.