

# Simon G Vendor Style Guide

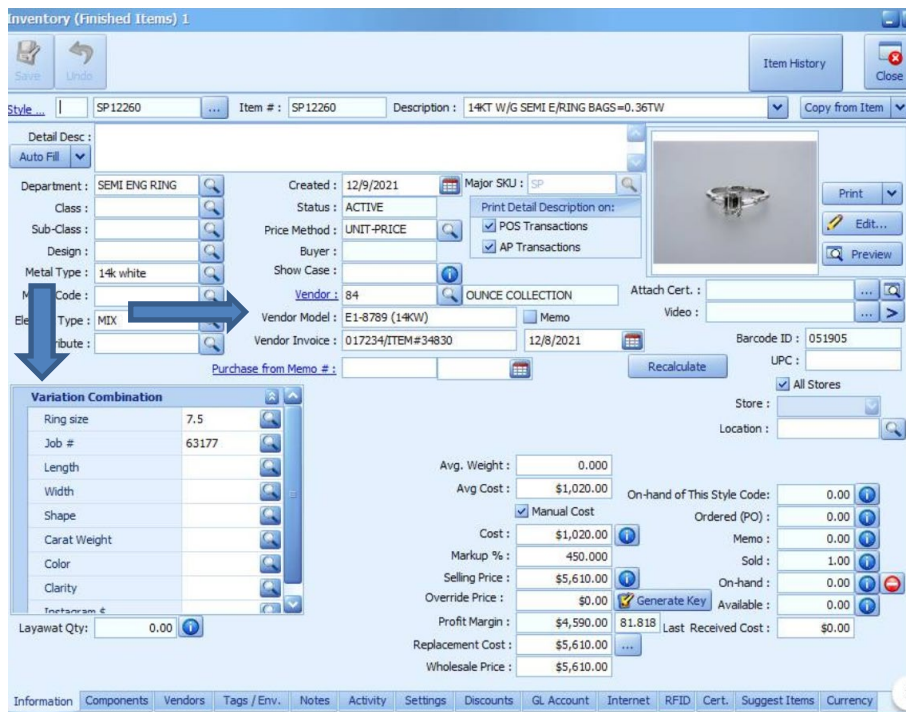
## for Jewelmate Point of Sale

Simon G has created their vendor style numbers in such a way that each variation of a particular design is accounted for, so there is no need to customize your numbers with metal colors, gemstones, sizes, or other information. Please see the attached guide for reading Simon G style numbers.

The correct style number for Simon G is entered in the Design # field: LB2060

Examples of incorrectly entered style numbers: LB-2060, LB2060/430087

Enter Simon G serial numbers (serial) numbers into one of 15 variation fields available in the Jewelmate software. It is advised to make this a required field.



\* As of 12/15/2021: Jewelmate has a 150-character limit for entering vendor style numbers and a 30-character limit for serial numbers.