

True Romance Vendor Style Guide

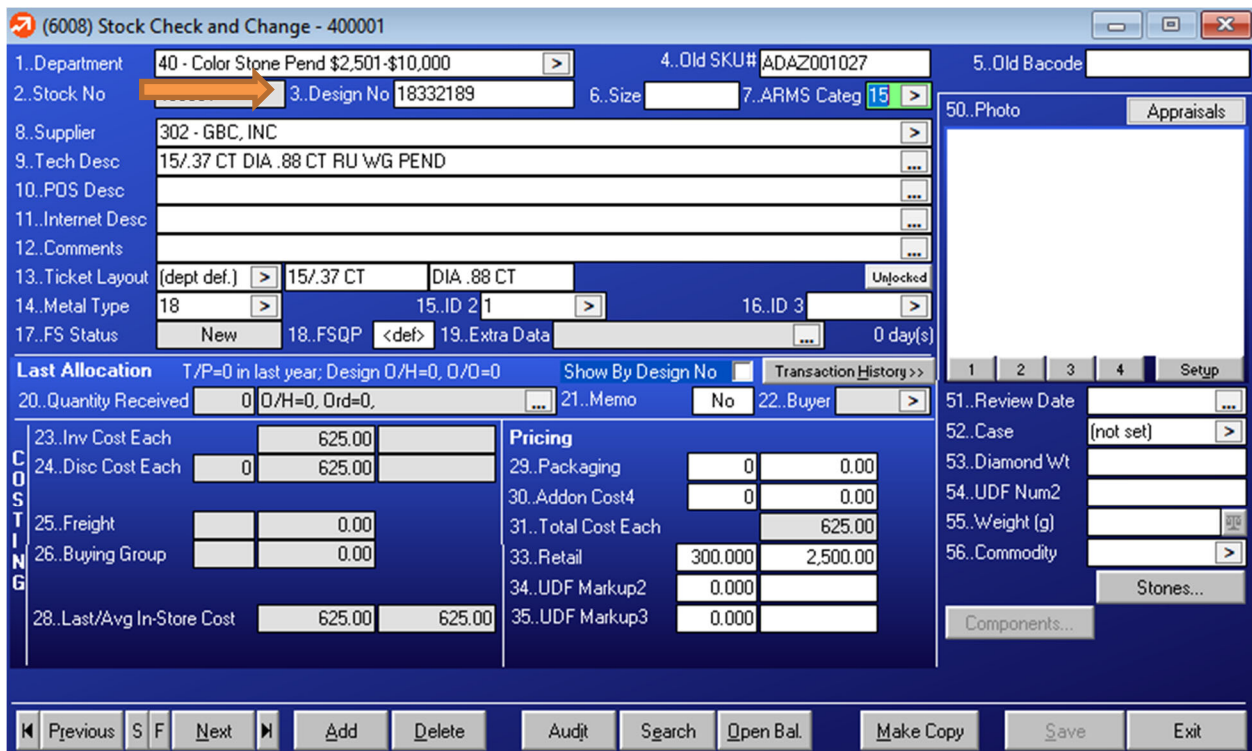
for ARMS Point of Sale

True Romance has created their vendor style numbers in such a way that each variation of a particular design is accounted for, so there is no need to customize your numbers with metal colors, gemstones, sizes, or other information.

The correct style number for True Romance is entered in the Design # field: WR977/E-E14WG

Examples of incorrectly entered style numbers include: WR977, WR977/E, WR977/E-E 14WG

True Romance does not use serial numbers.



* As of 12/15/2021: ARMS has a 50-character limit for entering vendor style numbers and serial numbers.