

BIG POS Guide Lika Behar - JCS

Lika Behar has created their vendor style numbers in such a way that each variation of a particular design is accounted for, so there is no need to customize your numbers with metal colors, gemstones, sizes, or other information.

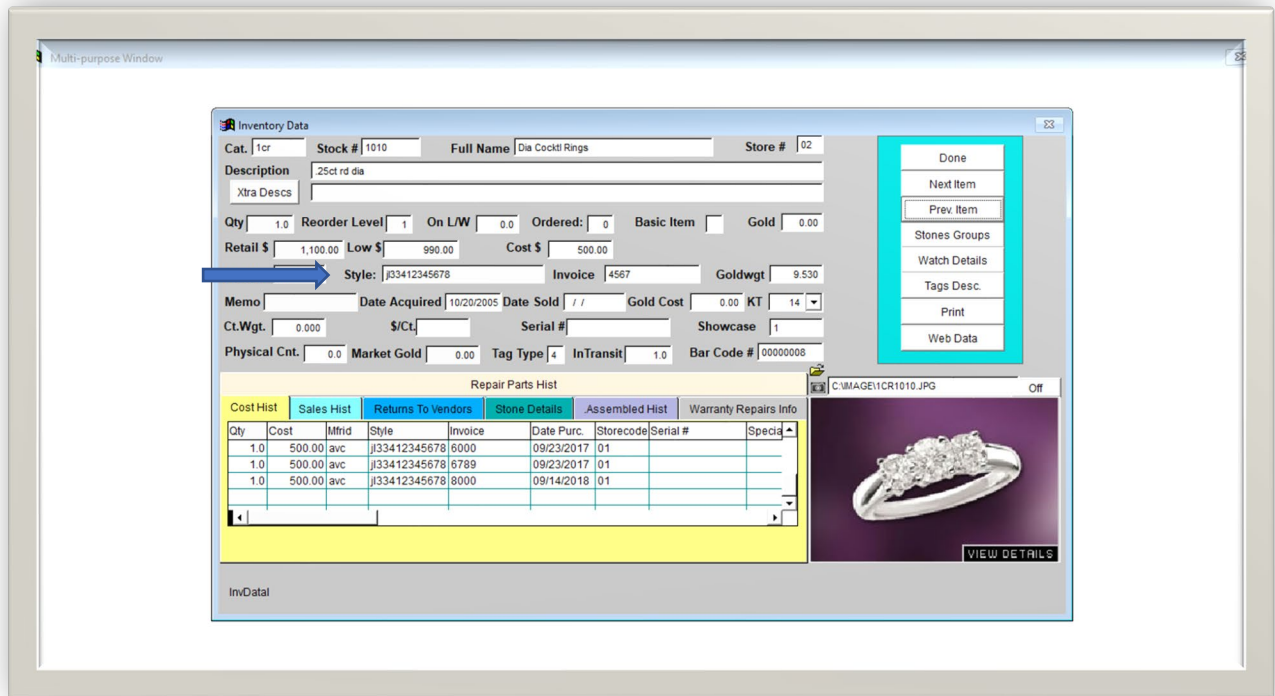
The correct style number for **Lika Behar** is entered in the Style # field: **DY-E-203-GOXD**

Examples of incorrectly entered style numbers: **DY-E-203-xxxx**, **DYE203GOXD**, **DY-E-203-**

JCS will auto populate any SKU that has been received before – be careful of using this as you begin to correct any previously bad entries.

Enter **Lika Behar** serial numbers in a Serial # field.

JCS also gives you the ability to receive your inventory as a csv file, please contact them directly for more information.



* As of 12/15/2021: JCS has a 20-character limit for entering vendor style numbers and a 15-character limit for entering serial numbers.

