

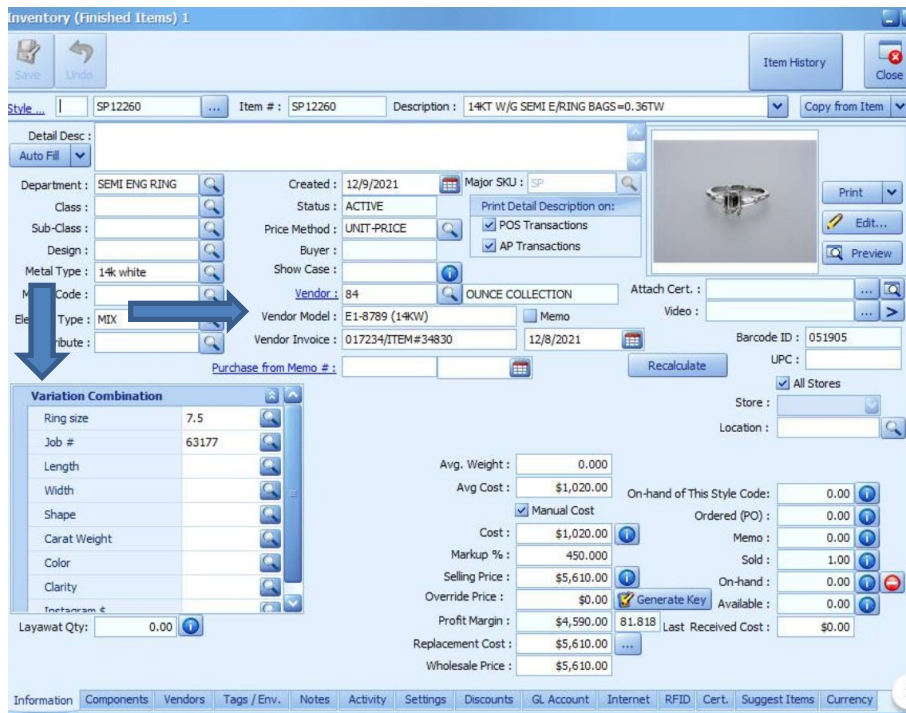
BIG POS Guide Lika Behar - Jewelmate

Lika Behar has created their vendor style numbers in such a way that each variation of a particular design is accounted for, so there is no need to customize your numbers with metal colors, gemstones, sizes, or other information.

The correct style number for **Lika Behar** is entered in the Design # field: **DY-E-203-GOXD**

Examples of incorrectly entered style numbers: **DY-E-203-xxxx**, **DYE203GOXD**, **DY-E-203**

Enter **Lika Behar** serial numbers into one of 15 variation fields available in the Jewelmate software. It is advised to make this a required field.



* As of 12/15/2021: Jewelmate has a 150-character limit for entering vendor style numbers and a 30-character limit for serial numbers.