

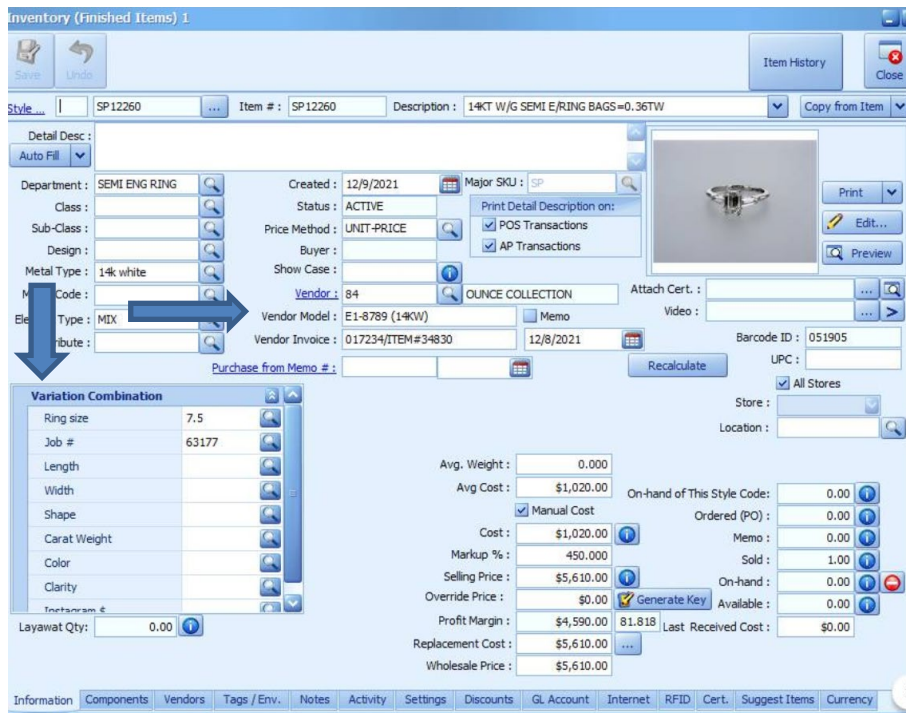
BIG POS Guide Michael M. - Jewelmate

Michael M. has created their vendor style numbers in such a way that each variation of a particular design is accounted for, so there is no need to customize your numbers with metal colors, gemstones, sizes, or other information.

The correct style number for **Michael M.** is entered in the Design # field: **R123-1**

Examples of incorrectly entered style numbers: **R1231, R123/1, R123-1CT, R123**

Enter **Michael M.** serial numbers into one of 15 variation fields available in the Jewelmate software. It is advised to make this a required field.



* As of 12/15/2021: Jewelmate has a 150-character limit for entering vendor style numbers and a 30-character limit for serial numbers.