

BIG POS Guide Tacori - JCS

Tacori has created their vendor style numbers in such a way that each variation of a particular design is accounted for, so there is no need to customize your numbers with metal colors, gemstones, sizes, or other information. Please see the attached guide for reading Tacori's style numbers.

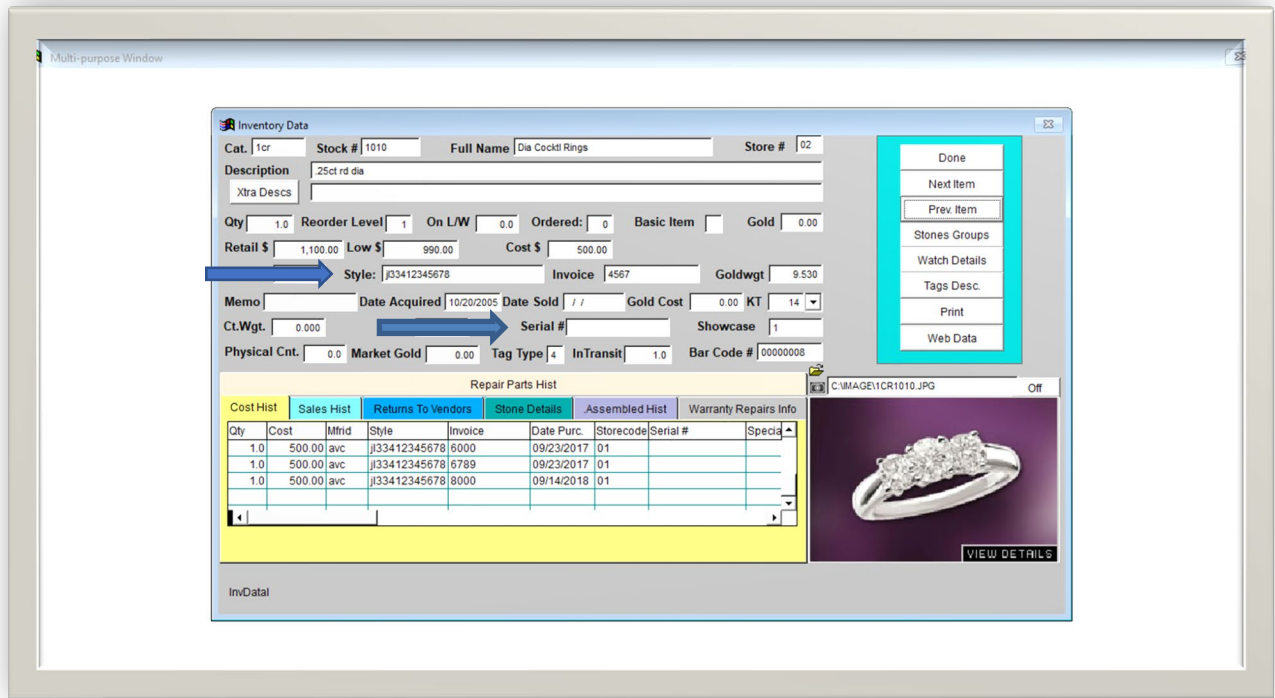
The correct style number for Tacori is entered in the Design # field: HT 2517 B 1/2X W

Examples of incorrectly entered style numbers: HT 2517 B, HT 2517, HT 2517-B

JCS will auto populate any SKU that has been received before – be careful of using this as you begin to correct any previously bad entries.

Enter Tacori serial numbers in the Serial # field.

JCS also gives you the ability to receive your inventory as a csv file, please contact them directly for more information.



* As of 12/15/2021: JCS has a 20-character limit for entering vendor style numbers and a 15-character limit for entering serial numbers.