

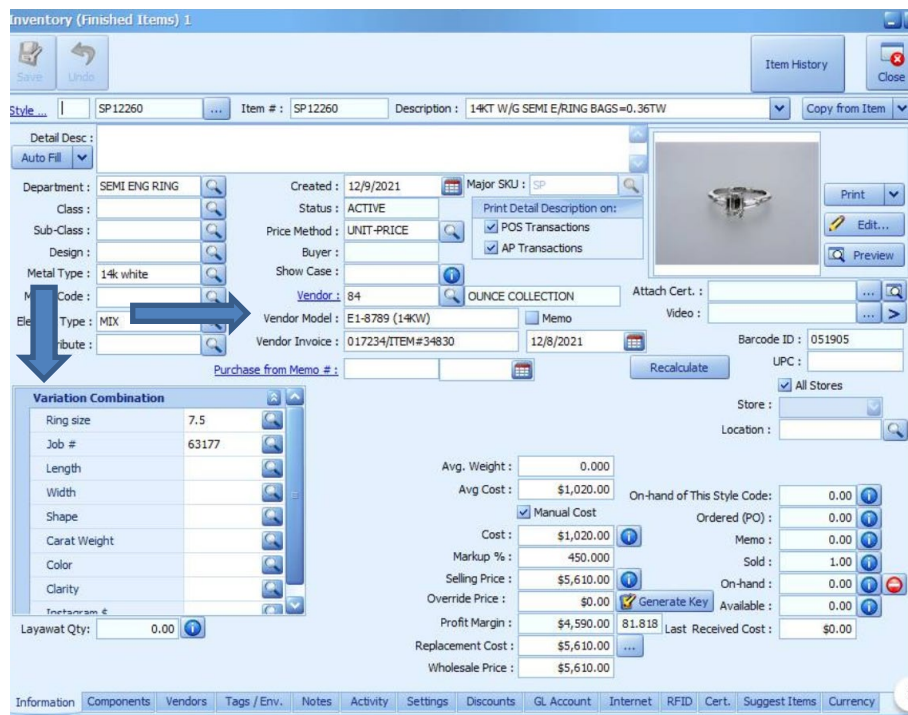
BIG POS Guide Tacori - Jewelmate

Tacori has created their vendor style numbers in such a way that each variation of a particular design is accounted for, so there is no need to customize your numbers with metal colors, gemstones, sizes, or other information. Please see the attached guide for reading Tacori's style numbers.

The correct style number for Tacori is entered in the Vendor Model # field: HT 2517 B 1/2X W

Examples of incorrectly entered style numbers: HT 2517, HT 2517 B, HT 2517-B

Enter Tacori serial numbers into one of 15 variation fields available in the Jewelmate software. It is advised to make this a required field.



* As of 12/15/2021: Jewelmate has a 150-character limit for entering vendor style numbers and a 30-character limit for serial numbers.