

Vlora Vendor Style Guide

for Jewelmate Point of Sale

Vlora has created their vendor style numbers in such a way that each variation of a particular design is accounted for, so there is no need to customize your numbers with metal colors, gemstones, sizes, or other information.

Please see below a reference key for help in reading Vlora's style numbers.

V is for Vlora

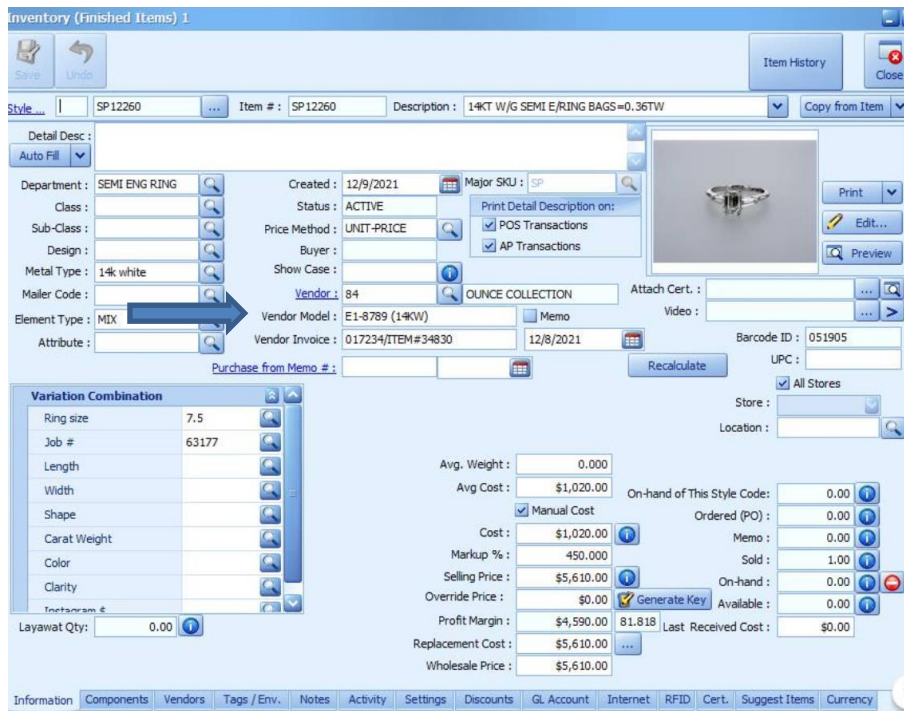
R, BB, B, ER, P, N is for the product category

YG, WG, RG are for metal color.

The correct style number for Vlora is entered in the Vendor Model # field: VR60001/YG

Examples of incorrectly entered style numbers include: VR60001, VR60001, VR60001YG, VR60001/YG/6

Vlora does not use serial numbers.



* As of 12/15/2021: Jewelmate has a 150-character limit for entering vendor style numbers and a 30-character limit for serial numbers.