

BIG POS Guide Frederick Goldman - for Shopkeeper Point of Sale

Frederick Goldman has created their vendor style numbers in such a way that each variation of a particular design is accounted for, so there is no need to customize your numbers with metal colors, gemstones, sizes, or other information.

Please see below for help in reading **Frederick Goldman's** style numbers.

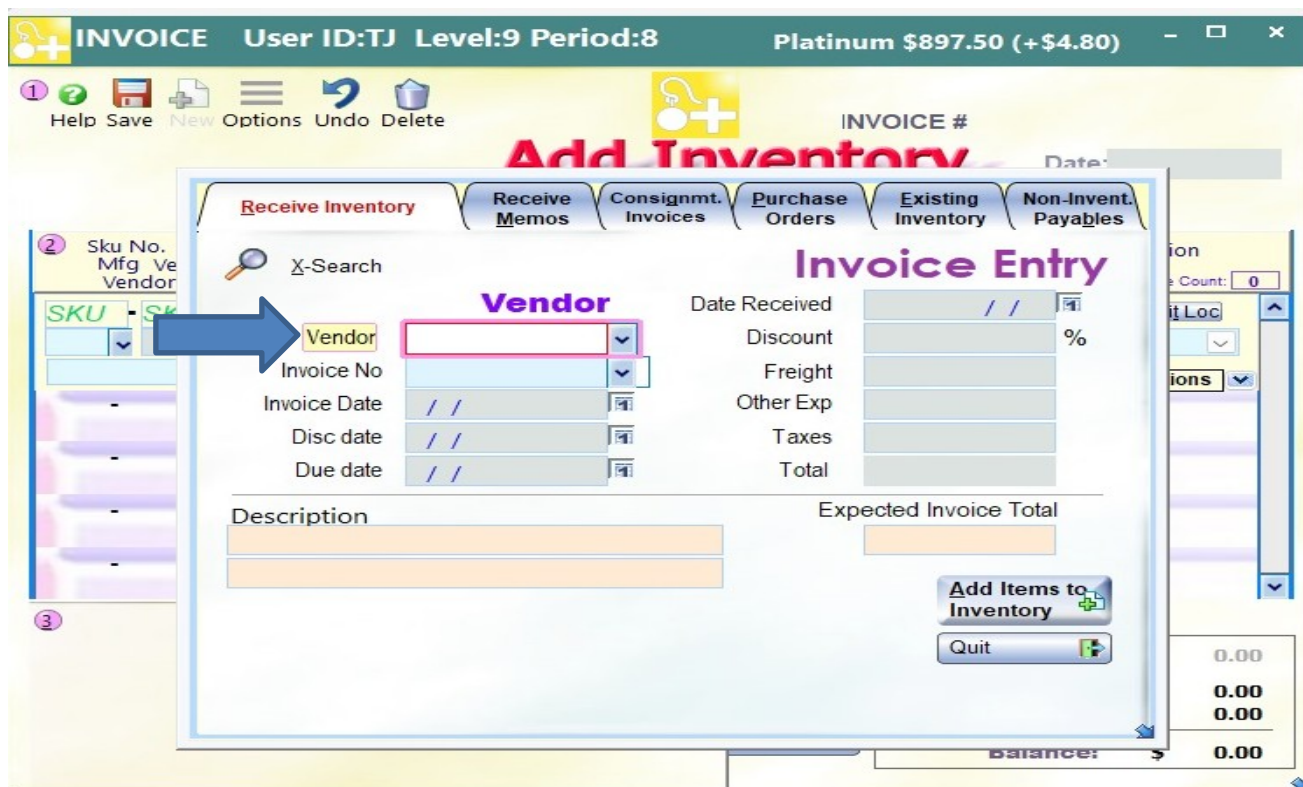
Ex: **11-8873W5-G.00**

- ⇒ **11** indicates that it is an engraved band (product type).
- ⇒ **8873W5** is the model indicator.
- ⇒ **G** means it's a Gent's band.
- ⇒ **00** following the period indicates which metal it is.

The correct style number for **Frederick Goldman** is entered in the Vendor field: **11-8873W5-G.00**

Examples of incorrectly entered style numbers: **11-9973W5-G, 11-8873, 11-8873W5-G-00, 11-8873W5.G.00**

Frederick Goldman does not use serial numbers.



BIG - BUYERS INTELLIGENCE GROUP

P.O. Box 480 • Napa, CA 94559 • Office 707-257-1456 • Fax 866-415-6782
www.BIGjewelers.com • info@BIGjewelers.com