

BIG POS Guide Vlora - for Shopkeeper Point of Sale

Vlora has created their vendor style numbers in such a way that each variation of a particular design is accounted for, so there is no need to customize your numbers with metal colors, gemstones, sizes, or other information.

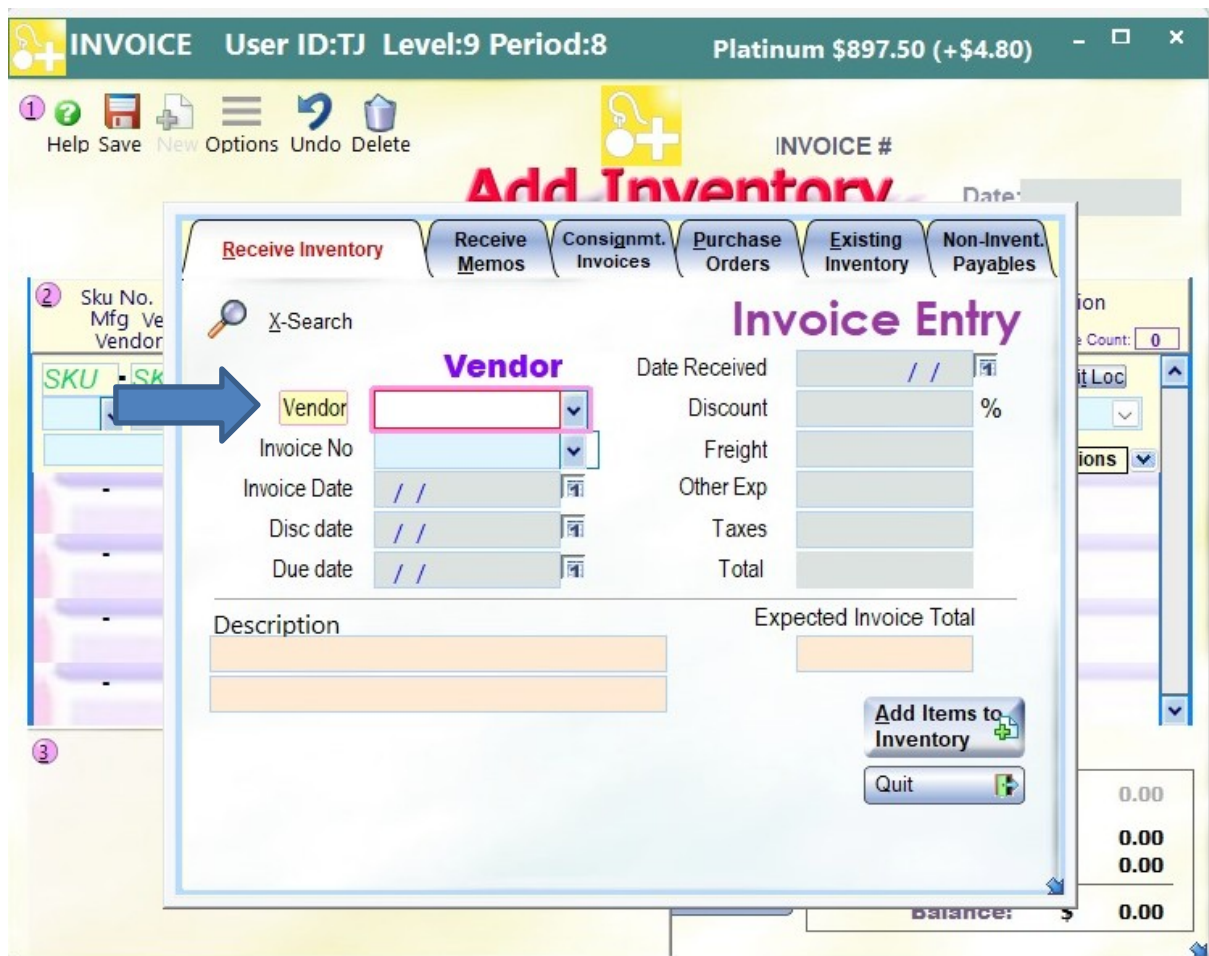
Please see below a reference key for help in reading Vlora's style numbers.

- **V** is for Vlora
- **R, BB, B, ER, P, N** is for the product category.
- **YG, WG, RG** are for metal color.

The correct style number for **Vlora** is entered in the Vendor field: **VR60001/YG**

Examples of incorrectly entered style numbers: **VR60001, VR60001, VR60001YG, VR60001/YG/6**

Vlora does not use serial numbers.



BIG - BUYERS INTELLIGENCE GROUP

P.O. Box 480 • Napa, CA 94559 • Office 707-257-1456 • Fax 866-415-6782
www.BIGjewelers.com • info@BIGjewelers.com