

# Hulchi Belluni

## Vendor Style Guide

### for JCS Point of Sale

**Hulchi Belluni** has created their vendor style numbers in such a way that each variation of a particular design is accounted for, so there is no need to customize your numbers with metal colors, gemstones, sizes, or other information.

The correct style number for **Hulchi Belluni** is entered in the Style # field: **20376-RW**

Please see below for help in reading **Hulchi Belluni's** style numbers:

**Reference numbers are built-up like this: 5 numbers defining the model, (sometimes a few letters that indicate a variation), a hyphen, some letters indicating the gold and stone type/color.**

**About the 5 numbers: The first 2 numbers give an indication of the collection, the 3rd number tells you the type of jewel (1 = Ring, 2 = Pendant/Necklace, 3 = Bracelet, 4 = Earrings) and the last 2 numbers are specific for a model.**

**Example: Stretch bracelet 20376-RW**

- **20 (Tresore Collection = Stretch has numbers from 20-23)**
- **3 (type of jewel 3 = Bracelet)**
- **76 (model number, if we enter new products the next one will be 77)**
- **RW = Pink Gold and White Diamonds**

**Example: Dentelle pendant 60252-WW**

- **60 (Dentelle and a few other collections of that period)**
- **2 (type of jewel 2 = pendant/necklace)**
- **52 (model number)**
- **WW = White Gold and White Diamonds**

**Example: Style # 09179S-RWW:**

- **RWW: RW for Pink and White Gold and another W for White Diamonds**

**Example: Style # 21348H4BL-WS:**

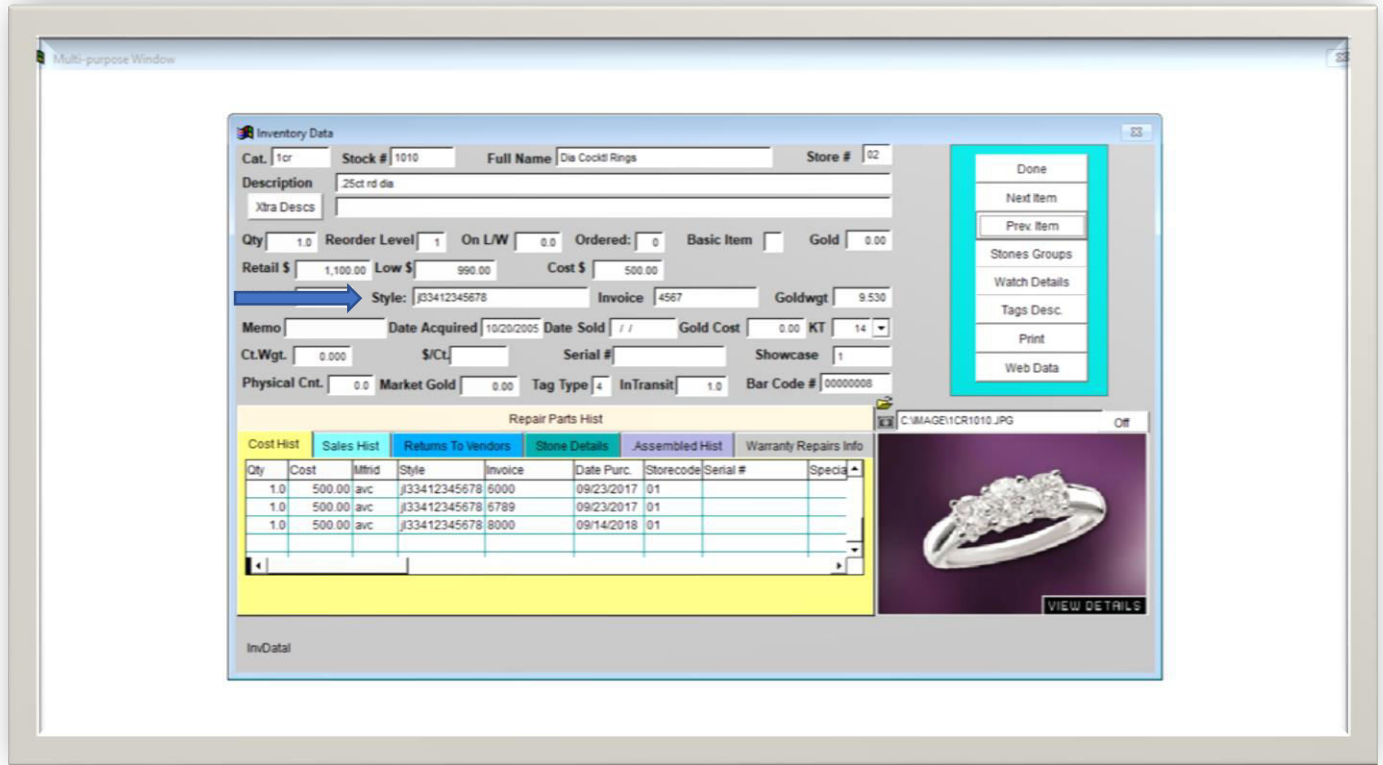
- **The H4 is for a different bead size and BL because the Sapphires are blue.**
- **WS = White Gold and Sapphires**

Examples of incorrectly entered style numbers: **160000RD100, 160RD, 16000-100, 160000/RD100, 160000-RD100 SO, 160000-RD100 (CUSTOMER NAME)**

Hulchi Belluni does not use serial numbers.

JCS will auto populate any SKU that has been received before – be careful of using this as you begin to correct any previously bad entries.

JCS also gives you the ability to receive your inventory as a csv file, please contact them directly for more information.



\* As of 12/15/2021: JCS has a 20-character limit for entering vendor style numbers and a 15-character limit for entering serial numbers.