

# Monica Rich Kosann

## Vendor Style Guide

### for JCS Point of Sale

**Monica Rich Kosann** has created their vendor style numbers in such a way that each variation of a particular design is accounted for, so there is no need to customize your numbers with metal colors, gemstones, sizes, or other information.

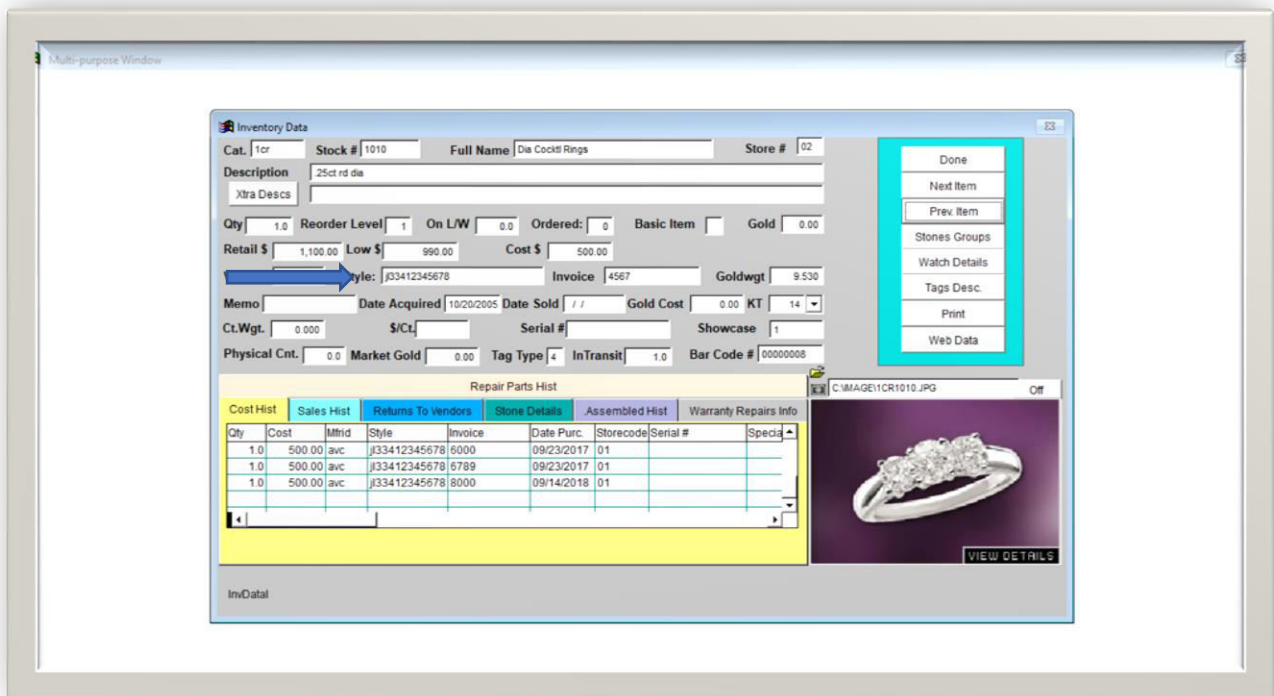
The correct style number for **Monica Rich Kosann** is entered in the Style # field: **44341**

Examples of incorrectly entered style numbers: **44341 SO**, **44341 (CUSTOMER NAME)**, **44341-WHITE**

**Monica Rich Kosann** does not use serial numbers.

JCS will auto populate any SKU that has been received before – be careful of using this as you begin to correct any previously bad entries.

JCS also gives you the ability to receive your inventory as a csv file, please contact them directly for more information.



\* As of 12/15/2021: JCS has a 20-character limit for entering vendor style numbers and a 15-character limit for entering serial numbers.