

Revelation LG Diamonds by Craft Diamond Vendor Style Guide for JCS Point of Sale

Revelation has created their vendor style numbers in such a way that each variation of a particular design is accounted for, so there is no need to customize your numbers with metal colors, gemstones, sizes, or other information.

The correct style number for **Revelation** is entered in the Style # field: **LBF04283-4W-IC**

Please see below for help in reading **Revelation's** style numbers: **LBF04283-4W-IC**

LBF04283-4W-IC: this defined by three parts as follows:

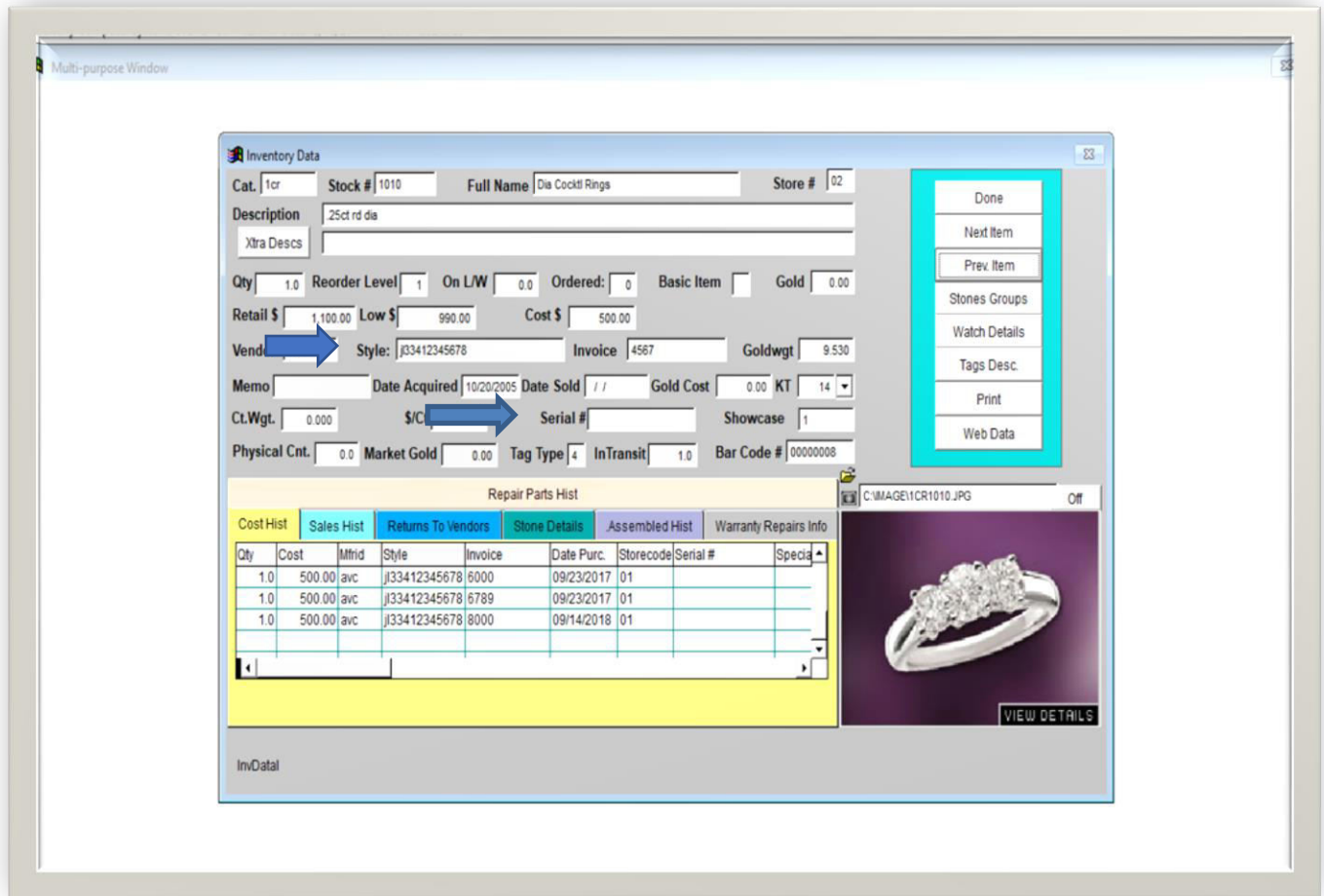
- 1. LBF04283 is the parent style#,**
- 2. 4W – 4 means 14KT, W means White gold, we generally offering everything in 14KT except special orders, so mostly it has 4, but if it has 8 then that stands for 18KT, if it has PT that means platinum, then the second letter is self-explanatory – W or Y for Yellow and P for Pink/Rose gold.**
- 3. IC: stands for the customer type, we have IC and RC, IC means independent customers of US, RC stands for independent customers of Canada.**

Examples of incorrectly entered style numbers: **LBF04283, LBF04283/4W; LBF042, LBF04283/4W/IC, LBF04283-4, LBF04283-IC size 7.5, LBF04283 (CUSTOMER NAME)**

JCS will auto populate any SKU that has been received before – be careful of using this as you begin to correct any previously bad entries.

Enter **Revelation** serial numbers into Serial # field.

JCS also gives you the ability to receive your inventory as a csv file, please contact them directly for more information.



* As of 12/15/2021: JCS has a 20-character limit for entering vendor style numbers and a 15-character limit for entering serial numbers.