

Costar Imports Vendor Style Guide

for JCS Point of Sale

Costar Imports has created their vendor style numbers in such a way that each variation of a particular design is accounted for, so there is no need to customize your numbers with metal colors, gemstones, sizes, or other information. Please see the attached guide for reading **Costar Imports'** numbers.

The correct style number for **Costar Imports** is entered in the Style # field: **R13038WPEG050**

Please see below for help in reading **Costar Imports'** style numbers:

Example- Item Number: R13038WPEG050

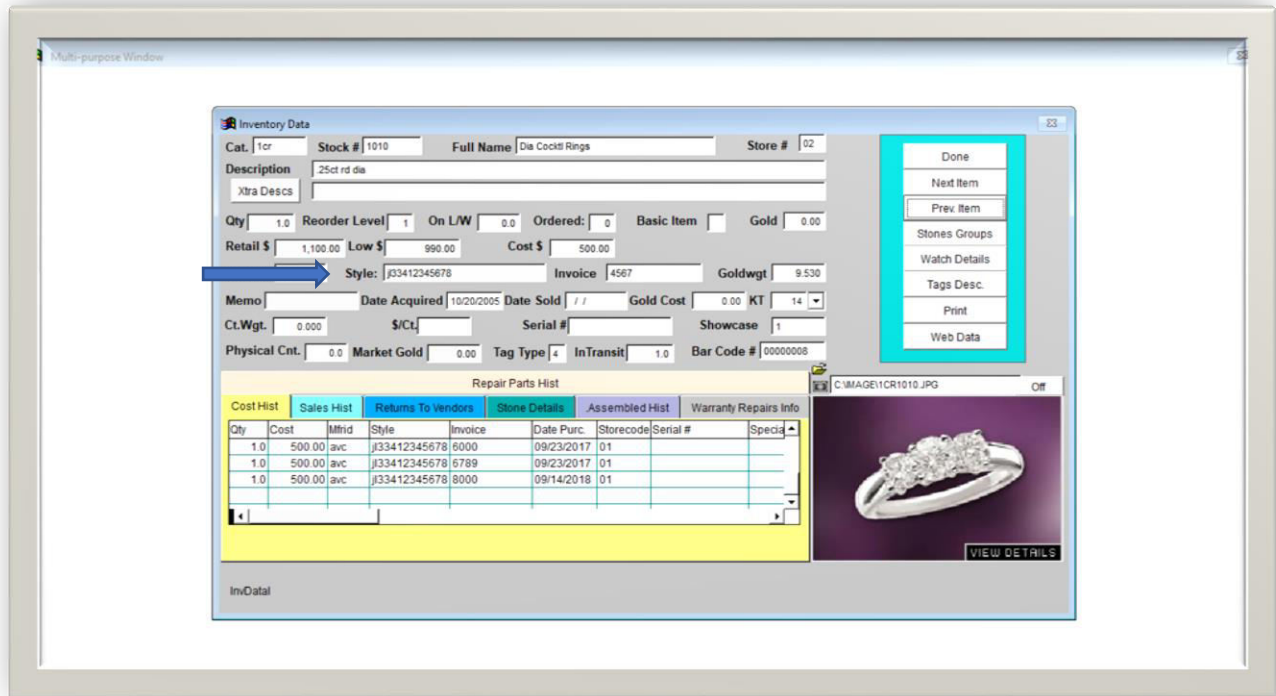
- R: Category- Ring
- 13038: The 5-digit numbers are the family number.
- W: Metal Color- white
- PEG: Peg Head Ring (Subcategory)
- 050: Total carat weight

Examples of incorrectly entered style numbers: **R13038, R13038W, 1308, R13038WPEG050 size 8, s/o R13038WPEG050, R13038WPEG050 white**

JCS will auto populate any SKU that has been received before – be careful of using this as you begin to correct any previously bad entries.

Costar Imports does not use serial numbers.

JCS also gives you the ability to receive your inventory as a csv file, please contact them directly for more information.



* As of 12/15/2021: JCS has a 20-character limit for entering vendor style numbers and a 15-character limit for entering serial numbers.