

# Gabriel & Co. Vendor Style Guide

## for JCS Point of Sale

**Gabriel & Co.** has created their vendor style numbers in such a way that each variation of a particular design is accounted for, so there is no need to customize your numbers with metal colors, gemstones, sizes, or other information. Please see the attached guide for reading **Gabriel & Co.'s** numbers.

The correct style number for **Gabriel & Co.** is entered in the Style # field: **ER4181R4W44JJ**

Please see below for help in reading **Gabriel & Co.'s** style numbers:

### **ER4181R4W44JJ**

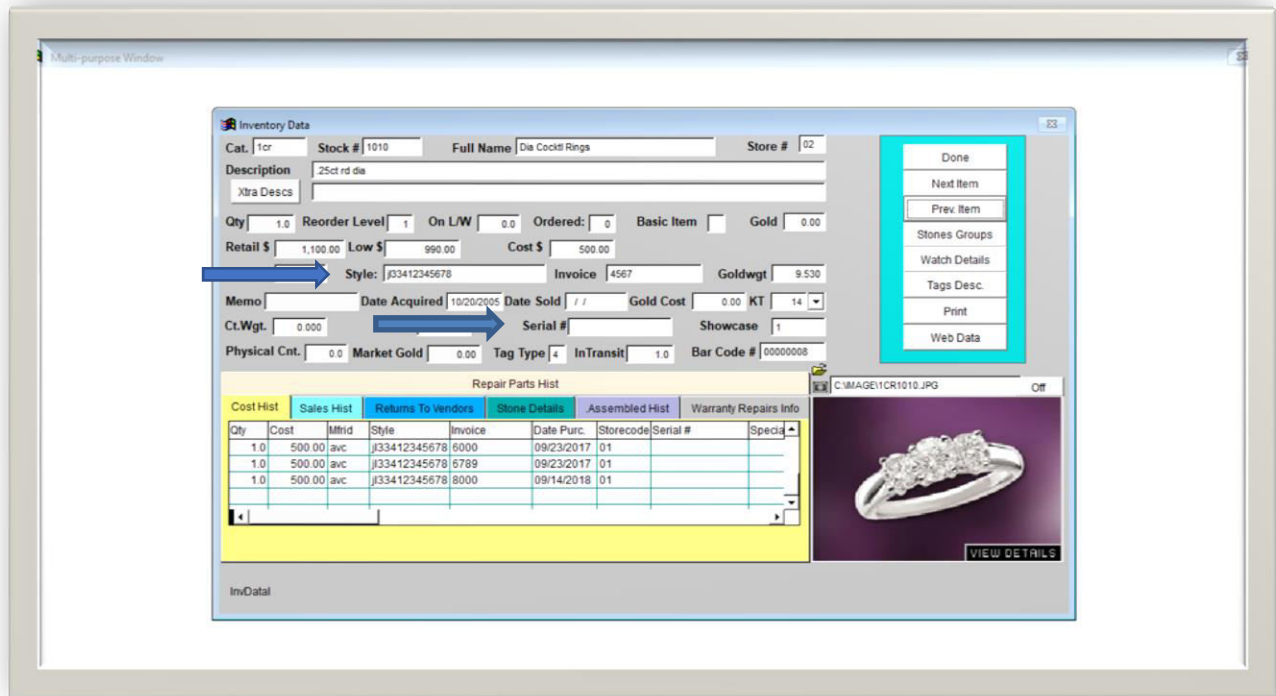
- **ER** – Item type (shown: ER – Engagement Ring)
- **4181** – Model #
- **R** – Head shape (shown: Round cut)
- **4** – Head size (shown: 1.00CT)
- **W4** – Metal type (shown: 14K White gold)
- **4** – Diamond quality (shown: D4 quality diamond)
- **JJ** – Color Stones (shown: No color stones)
- Whenever you see **.S** followed by three numbers it suggests that the engagement ring has been specially sized. Example: ER4181W44JJ.**S550**. In this case sized to a 5.5.
- Whenever you see **.0001** it suggests that the engagement ring has been customized. Example: ER4181W44JJ.**0021**. In this case, this is the 21<sup>st</sup> time this ring has been customized.
- Whenever you see the base style number start with a **9**, and end with **.CSD4**, it is most likely an adore ring. **.CSD4** signifies the center stone is included. Example: ER**9**4181W44JJ.**CSD4**. In this case, D4 quality center stone is included.
- Whenever you see the base style number end with **.CSCZ**, it is most likely a ring where a CZ center stone has been set.

Examples of incorrectly entered style numbers: **ER4181-R4**, **ER4181**, **ER4181R4W44JJ size 7**, **ER4181R4W44JJ yellow**, **s/o ER4181R4W44JJ**

JCS will auto populate any SKU that has been received before – be careful of using this as you begin to correct any previously bad entries.

Enter **Gabriel & Co.** serial numbers in a Serial # field.

JCS also gives you the ability to receive your inventory as a csv file, please contact them directly for more information.



\* As of 12/15/2021: JCS has a 20-character limit for entering vendor style numbers and a 15-character limit for entering serial numbers.