

Gems One Vendor Style Guide

for JCS Point of Sale

Gems One has created their vendor style numbers in such a way that each variation of a particular design is accounted for, so there is no need to customize your numbers with metal colors, gemstones, sizes, or other information. Please see the attached guide for reading **Gems One's** numbers.

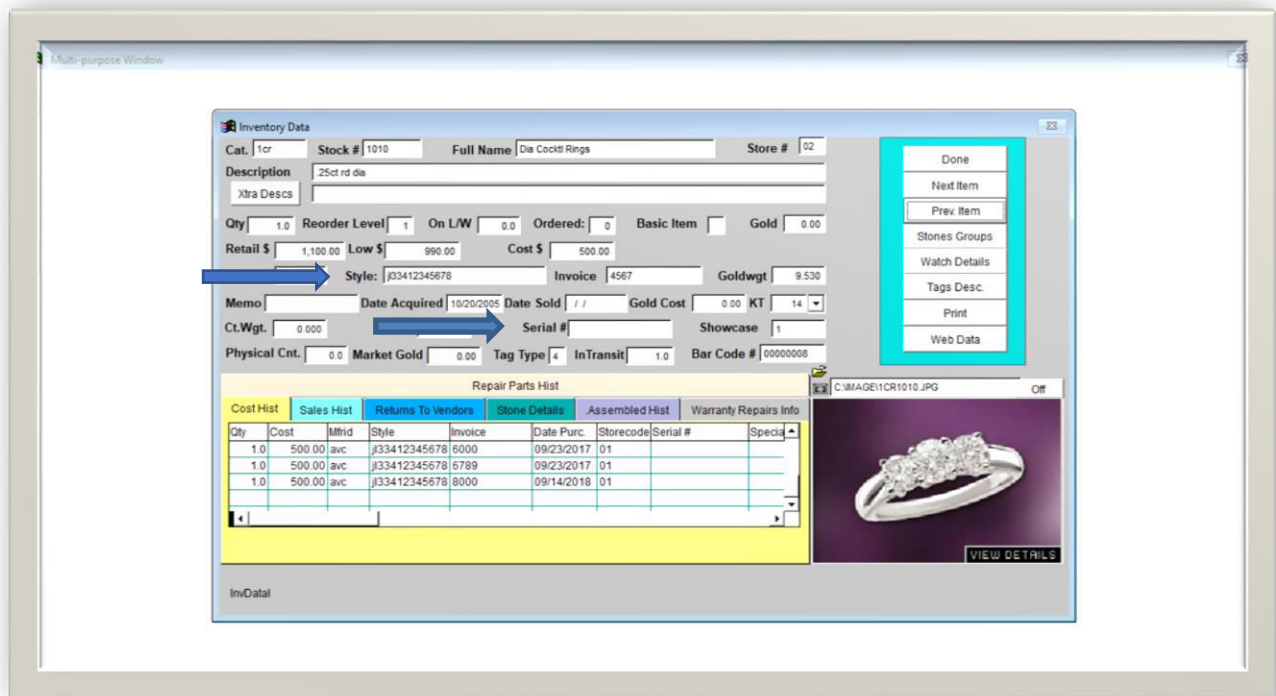
The correct style number for **Gems One** is entered in the Style # field: **ABC30005/4CTW-4W**

Examples of incorrectly entered style numbers: ABC300054CTW4W, 300054, ABC30054W, S/O ABC30005/4CTW-4W, ABC30005/4CTW-4W WHITE

JCS will auto populate any SKU that has been received before – be careful of using this as you begin to correct any previously bad entries.

Gems One does not use serial numbers.

JCS also gives you the ability to receive your inventory as a csv file, please contact them directly for more information.



* As of 12/15/2021: JCS has a 20-character limit for entering vendor style numbers and a 15-character limit for entering serial numbers.