

# Gems One Vendor Style Guide

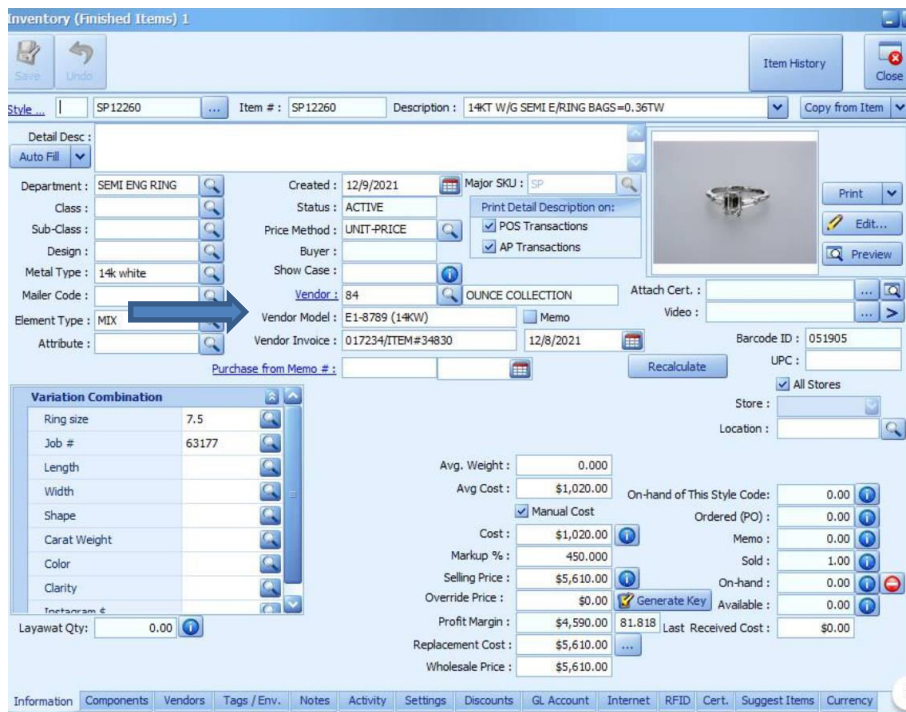
## for Jewelmate Point of Sale

**Gems One** has created their vendor style numbers in such a way that each variation of a particular design is accounted for, so there is no need to customize your numbers with metal colors, gemstones, sizes, or other information. Please see the attached guide for reading **Gems One**. style numbers.

The correct style number for **Gems One** is entered in the Design # field: **ABC30005/4CTW-4W**

Examples of incorrectly entered style numbers: ABC300054CTW4W, 300054, ABC30054W, S/O ABC30005/4CTW-4W, ABC30005/4CTW-4W WHITE

**Gems One** does not use serial numbers.



\* As of 12/15/2021: Jewelmate has a 150-character limit for entering vendor style numbers and a 30-character limit for serial numbers.