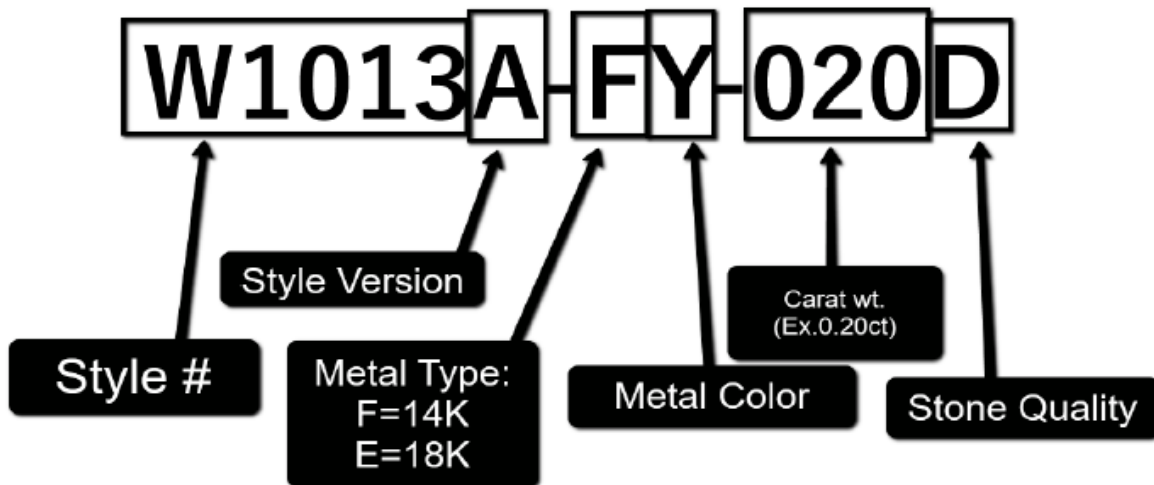


BIG POS Guide Jocalio - Edge

Jocalio has created their vendor style numbers in such a way that each variation of a particular design is accounted for, so there is no need to customize your numbers with metal colors, gemstones, sizes, or other information. Please see the attached guide for reading **Jocalio's** numbers.

The correct style number for Jocalio is entered in the Vendor Style # field: **W1013A-FY-020D**

Please see below for help in reading **Jocalio's** style numbers:



Examples of incorrectly entered style numbers: **W1013A**, **1013**, **W1013A-020D**, **W1013A YELLOW**, **S/O W1013A-FY-020D**

Edge will auto populate any SKU that has been received before – be careful of using this as you begin to correct any previously bad entries.

Jocalio does not use serial numbers.

General Stones Tag Quantities Notes Pop-Ups Disassembled Pre-Appraise History Website

Item #001-140-00002(?) Category: 140 Diamond Semi-Mount Rings

Vendor Info

Vendor ID: [dropdown]
PO #: [text]
Invoice #: [text]
Quantity: 1 [text] Invoice [button]
Ven Style #: [dropdown]
Style Note: [text]
Barcode: [text]
Stock Type: Stock [dropdown]
 POS Frequently Sold Item

Inventory

Allocate [checkbox]
Location: [dropdown]
Status: I Customer Spec [dropdown]
As Of: [text]
Date Entered: [dropdown]
Entered By: [text]
Price Meth: Fine Jewelry, Individual Item [dropdown]
 Exclude From Rewards

Pricing

Cost: [text] Auto
Re-Cost: [text]
Re-Cost Dt: [dropdown] MARGIN [text]
Retail: [text]
Lowest: [text]
Current: [text]
Sold: [text]
Spiff: [text] Recalc [button]

(1) Ring Details

Style: [dropdown]
Metal: [dropdown]
Color: [dropdown]
Finish: [dropdown]
Ring Size: [text]
Serial #: [text]

(2)

On Sale [checkbox]
Price: [text]
Margin: [text]
Starts: [text]
Ends: [text]
Sign: [text]

Description: ABC abc Abc
Suggest [button]

Copy Item Details [button]

BIG - BUYERS INTELLIGENCE GROUP

P.O. Box 480 • Napa, CA 94559 • Office 707-257-1456 • Fax 866-415-6782
www.BIGjewelers.com • info@BIGjewelers.com