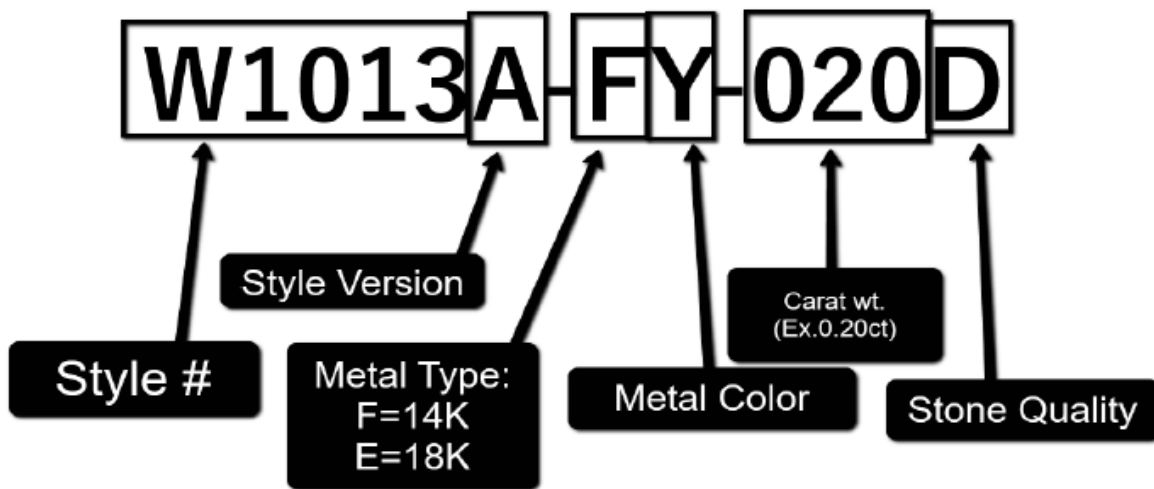


Jocalio Vendor Style Guide for JCS Point of Sale

Jocalio has created their vendor style numbers in such a way that each variation of a particular design is accounted for, so there is no need to customize your numbers with metal colors, gemstones, sizes, or other information. Please see the attached guide for reading **Jocalio's** numbers.

The correct style number for **Jocalio** is entered in the Style # field: **W1013A-FY-020D**

Please see below for help in reading **Jocalio's** style numbers:

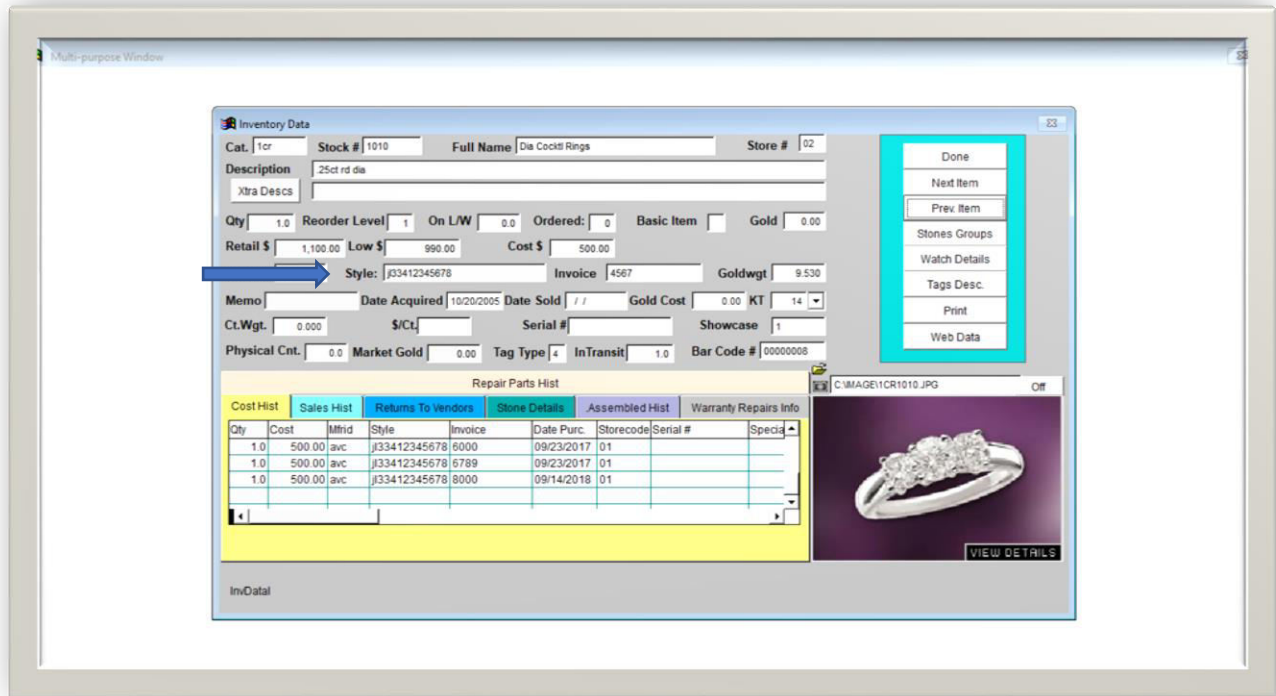


Examples of incorrectly entered style numbers: **W1013A**, **1013**, **W1013A-020D**, **W1013A YELLOW**, **S/O W1013A-FY-020D**

JCS will auto populate any SKU that has been received before – be careful of using this as you begin to correct any previously bad entries.

Jocalio does not use serial numbers.

JCS also gives you the ability to receive your inventory as a csv file, please contact them directly for more information.



* As of 12/15/2021: JCS has a 20-character limit for entering vendor style numbers and a 15-character limit for entering serial numbers.