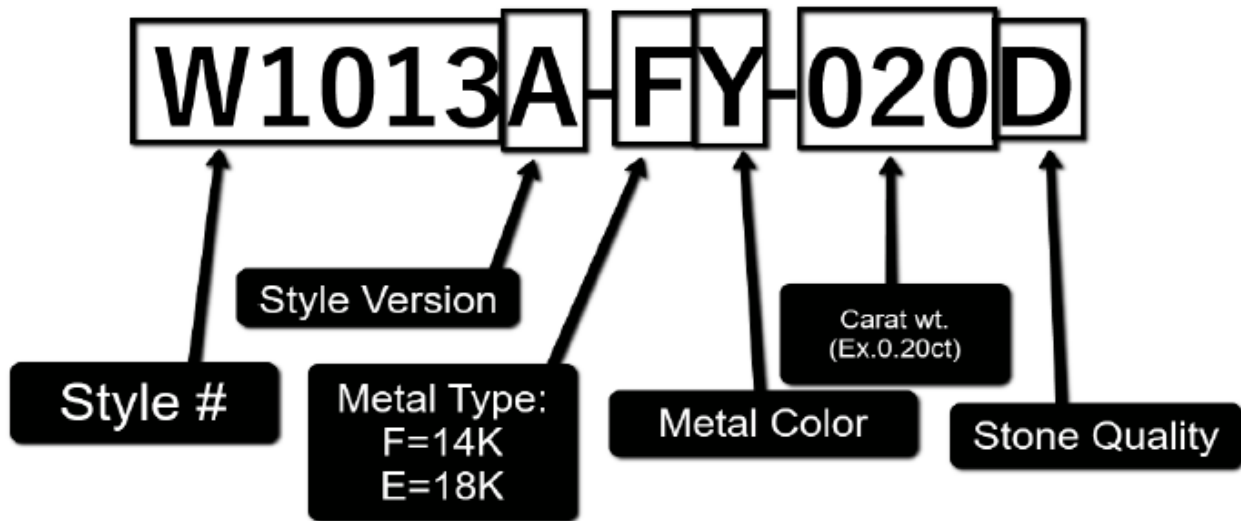


BIG POS Guide Jocalio - Lightspeed

Jocalio has created their vendor style numbers in such a way that each variation of a particular design is accounted for, so there is no need to customize your numbers with metal colors, gemstones, sizes, or other information.

The correct style number for **Jocalio** is entered in the Vendor ID field: **W1013A-FY-020D**

Please see below for help in reading **Jocalio's** style numbers:



Examples of incorrectly entered style numbers include: **W1013A**, **1013**, **W1013A-020D**, **W1013A YELLOW**, **S/O W1013A-FY-020D**

Lightspeed will auto populate any SKU that has been received before – be careful of using this as you begin to correct any previously bad entries.

Jocalio does not use serial numbers.

Lightspeed also gives you the ability to receive your inventory as a CSV file, please contact them directly for more information.

Save Changes Add Label Print Label Duplicate Archive

- Details
- Inventory
- Serial #s
- Vendor IDs
- Sales
- Layaways
- Special Orders
- Workorders
- Customers
- Graphs
- Purchase Orders
- Vendor Returns
- History
- Merge

SS 36mm Auto Ballon Bleu on Brac

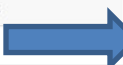
Type Single Serialized

+ Add Images

IDs

System ID	210000016765
UPC	UPC
EAN	EAN
Custom SKU	Custom SKU
Manufact. SKU	WSBB0048

Organize

Category	Watches / Ladies / Automatic	
Brand	Cartier	
Tags	memo	x

eCommerce

Pricing

NAME	PRICE	MARKUP	MARGIN
Default	\$ 6250.00	58.7%	37.0%
MSRP	\$ 6350.00	61.3%	38.0%

Discounts Allowed

Taxable Tax Class Item

Inventory Defaults

Default Cost	\$ 3937.50
Vendor	Cartier
Vendor ID	WSBB0048

Automatic Re-Ordering

Reorder Point	0
Desired Inventory Level	0

Stock

In Stock	3
Avg. Cost	\$3937.50

Orders

Layaway	0
Special Order	0
On Order	0
Pending Return	0
Workorder	0

Sales History

Day	0
Week	0
Month	0
Year	5
All	5