

# M.K. Luxury Group Vendor Style Guide

## for JCS Point of Sale

**M.K. Luxury Group** has created their vendor style numbers in such a way that each variation of a particular design is accounted for, so there is no need to customize your numbers with metal colors, gemstones, sizes, or other information. Please see the attached guide for reading **M.K. Luxury Group's** numbers.

The correct style number for **M.K. Luxury Group** is entered in the Style # field: **CDOV.200-W-7.**

Please see below for help in reading **M.K. Luxury Group's** style numbers:

**CDOV.200-W-7.**

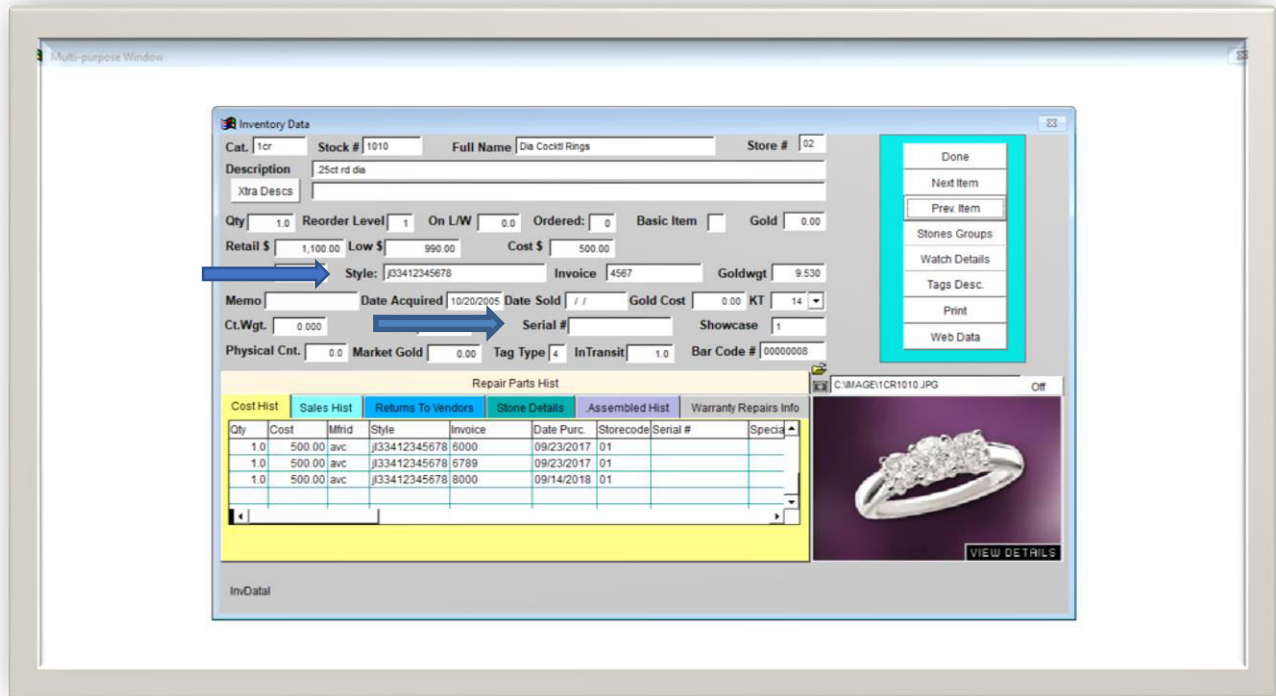
- **CD -> type of diamond (in this case lab grown)**
- **OV -> Center Stone Shape (in this case Oval)**
- **200 -> Center stone size (in this case 2 carats)**
- **W -> Metal color (in this case White Gold)**
- **7 -> Finger size (in this case 7)**

Examples of incorrectly entered style numbers: **CDOV200W7, CDOV200 WHITE, S/O CDOV.200-W-7., CDOV.200-W-7 SIZE 6**

JCS will auto populate any SKU that has been received before – be careful of using this as you begin to correct any previously bad entries.

Enter **M.K. Luxury Group** serial numbers in a Serial # field.

JCS also gives you the ability to receive your inventory as a csv file, please contact them directly for more information.



\* As of 12/15/2021: JCS has a 20-character limit for entering vendor style numbers and a 15-character limit for entering serial numbers.