

iDD LUXE Vendor Style Guide

for JCS Point of Sale

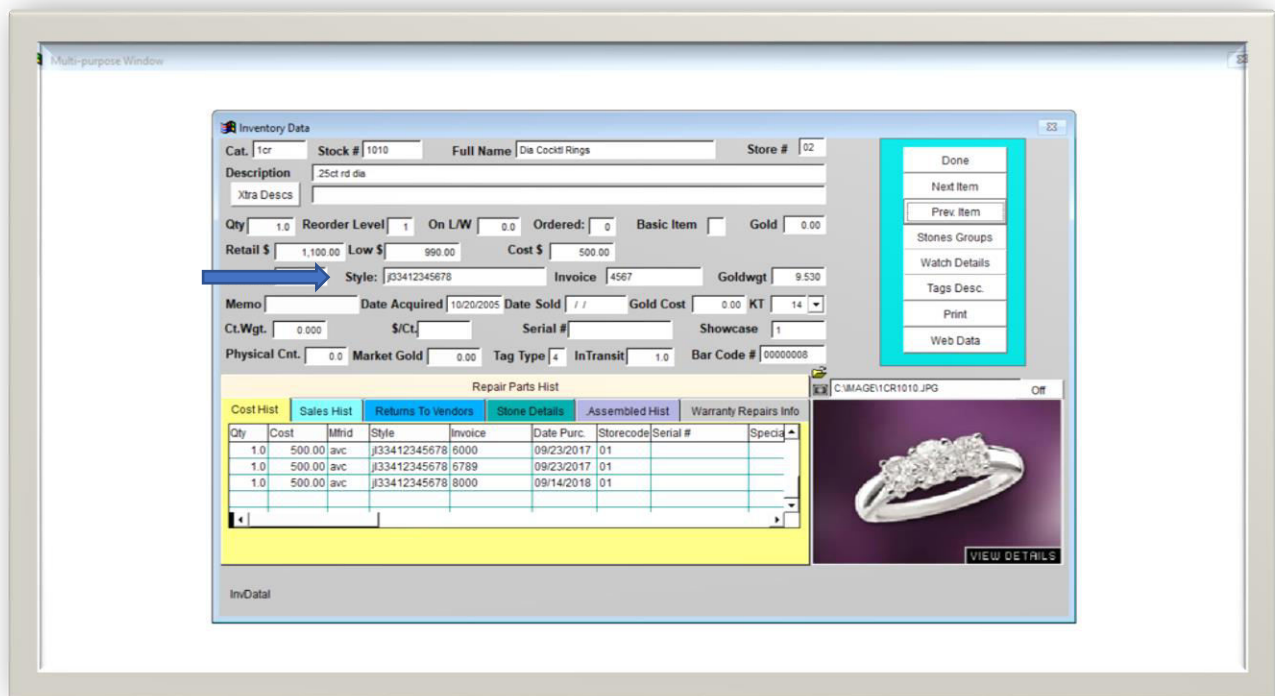
iDD LUXE has created their vendor style numbers in such a way that each variation of a particular design is accounted for, so there is no need to customize your numbers with metal colors, gemstones, sizes, or other information. Please see the attached guide for reading iDD LUXE's numbers.

The correct style number for iDD LUXE is entered in the Style # field: **MB004OP4**

Examples of incorrectly entered style numbers: **MBoo4, MB004, MB004-OP4**

JCS will auto populate any SKU that has been received before – be careful of using this as you begin to correct any previously bad entries.

Enter iDD LUXE serial numbers in a Serial # field.



* As of 12/15/2021: JCS has a 20-character limit for entering vendor style numbers and a 15-character limit for entering serial numbers.

