

IDD LUXE Vendor Style Guide

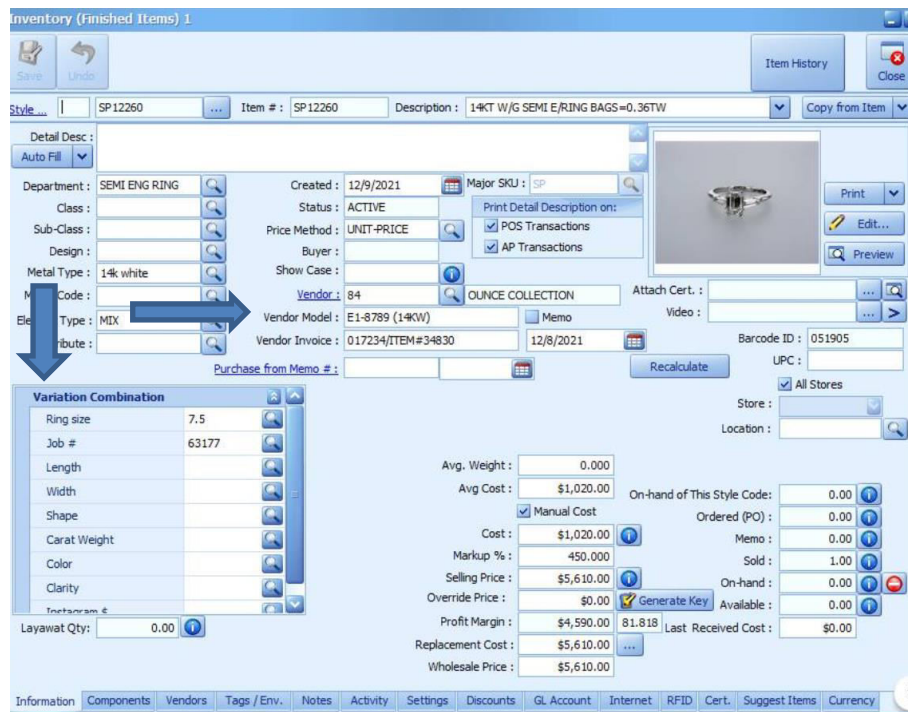
for Jewelmate Point of Sale

IDD LUXE has created their vendor style numbers in such a way that each variation of a particular design is accounted for, so there is no need to customize your numbers with metal colors, gemstones, sizes, or other information. Please see the attached guide for reading **IDD LUXE**. style numbers.

The correct style number for IDD LUXE is entered in the Design # field: **MB004OP4**

Examples of incorrectly entered style numbers: **MBoo4**, **MB004**, **MB004-OP4**

Enter IDD LUXE serial numbers (serial) numbers into one of 15 variation fields available in the Jewelmate software. It is advised to make this a required field.



* As of 12/15/2021: Jewelmate has a 150-character limit for entering vendor style numbers and a 30-character limit for serial numbers.