

Penny Preville Vendor Style Guide

for Jewelmate Point of Sale

Penny Preville has created their vendor style numbers in such a way that each variation of a particular design is accounted for, so there is no need to customize your numbers with metal colors, gemstones, sizes, or other information. Please see the following guide for reading **Penny Preville** item numbers:

B = Bracelet

E = Earring

N = Necklace

C = Enhancer -pendant w/hinged bale (no chain)

R = Ring

CH- small charm without chain (for instance our letters or engravable petite charms)

Metal

G = Yellow

W = White

R = rose

G/W = TWO TONED WHEREAS THE MAIN COLOR IS YELLOW (YELLOW CHAIN)

W/G = TWO TONED WHEREAS THE MAIN COLOR IS WHITE GOLD (WHITE GOLD CHAIN)

OTHER

PP – Petite Penny

SW- SMALLER VERSION/SIZE

LG - LARGER VERSION/SIZE

-B - BLUE SAPPHIRE

-P - PINK SAPPHIRE

-E - EMERALD

-R - RUBY

-BLK - BLACK RHODIUM IS APPLIED

SIZE

all rings are ordered in stock size 6.5

all bracelets are ordered stock size 6.25"

if there is another number after the style code that was a special order in that size.

BIG - BUYERS INTELLIGENCE GROUP

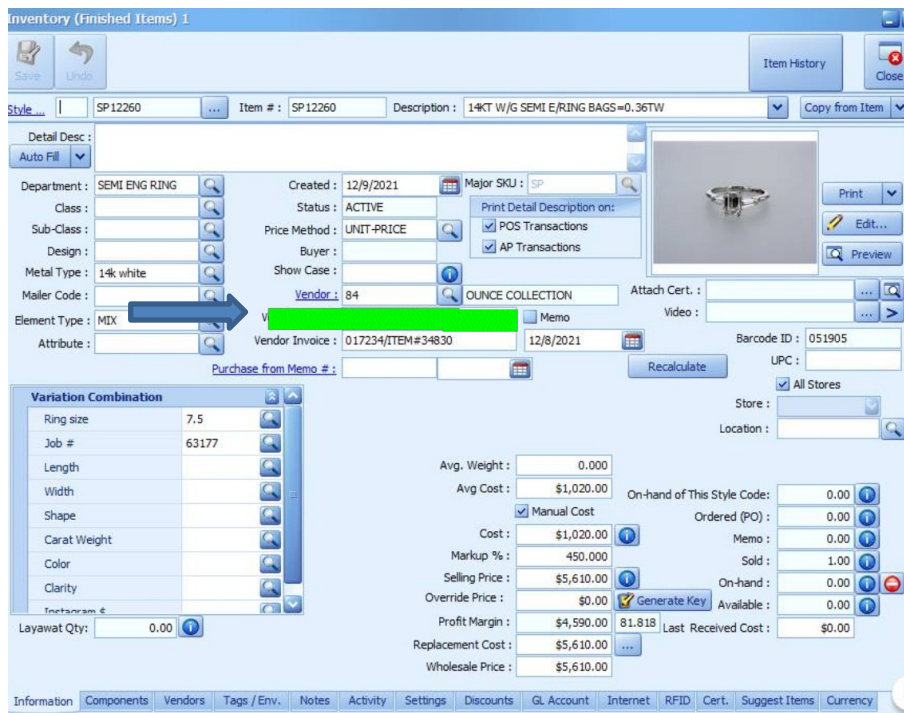
P.O. Box 480 • Napa, CA 94559 • Office 707-257-1456
www.BIGjewelers.com • info@BIGjewelers.com

The correct **item number** for **Penny Preville** is entered in the Vendor Model field: **B7567W**

Examples of incorrectly entered style numbers: **7567, 7567W, S/O B7567, B7567W 7" Smith**

Penny Preville does not use serial numbers.

Ref #	Sr#	Item #	Sku #	Description	Qty	Price	Amount
2005670	105	B7567W		18k .23ct straight thin bar bracelet (7"	1.00		
2005670	109	C1501W		18k 0.17ct diamond star medallion (18.50	1.00		
2005670	110	C1514W		18kg .45ct diamond and .15ct sapphire mi	1.00		
2005670	122	N7423W		18k 0.54ct pave bar necklace on plain ch	1.00		
2005670	126	E1038G		18k .40ct engraved twist bezel on post	1.00		
2005670	132	E4299G		18K .77CT ROUND AND PEAR SHAPE (.1	1.00		



* As of 12/15/2021: Jewelmate has a 150-character limit for entering vendor style numbers and a 30-character limit for serial numbers.